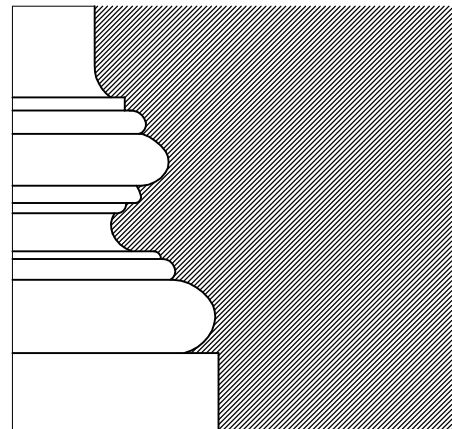


Date: May 8, 2018

1 OF 6



EVELYN COLE SMITH ARCHITECTS, LLC
PO Box 182
134 Main St
Pulnam, CT
06260
860 315 9570

www.ecsarchitects.com

STAMP

RESERVED

PROJECT

Proposed New Facilities
**Pomfret
Emergency Resources
Center**
Route 44
Pomfret, Connecticut

Prepared for
Town of Pomfret
5 Haven Road (Route 44)
Pomfret Center, CT 06259

REVISIONS

Date	Description

SHEET TITLE

Design-Build
Documents
Foundation Plan

PROJ. NO. 2018003

SCALE AS NOTED

DATE May 8, 2018

DESIGNED LYN SMITH, AIA, LEED AP

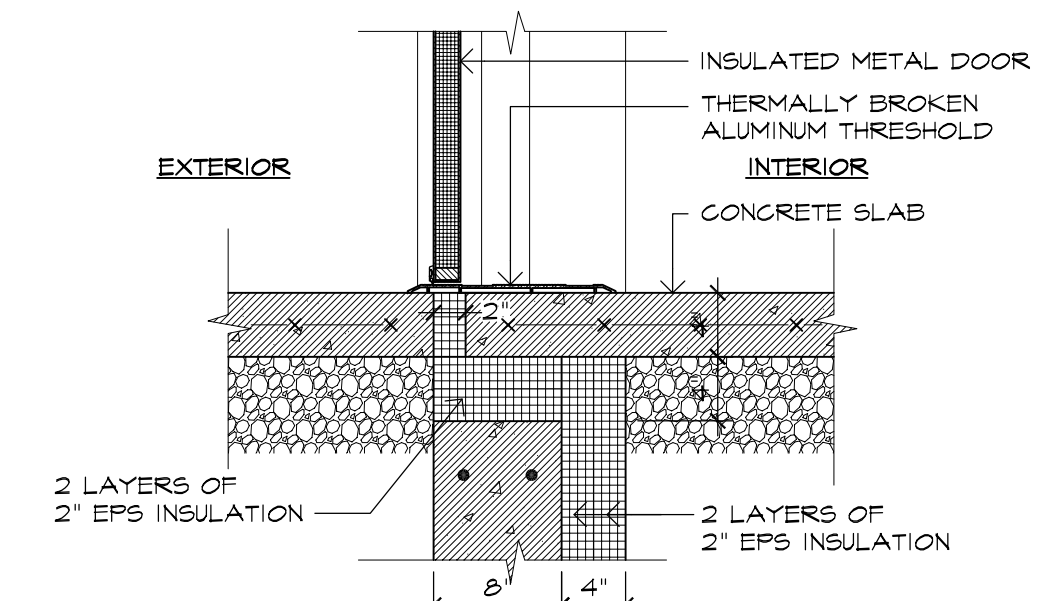
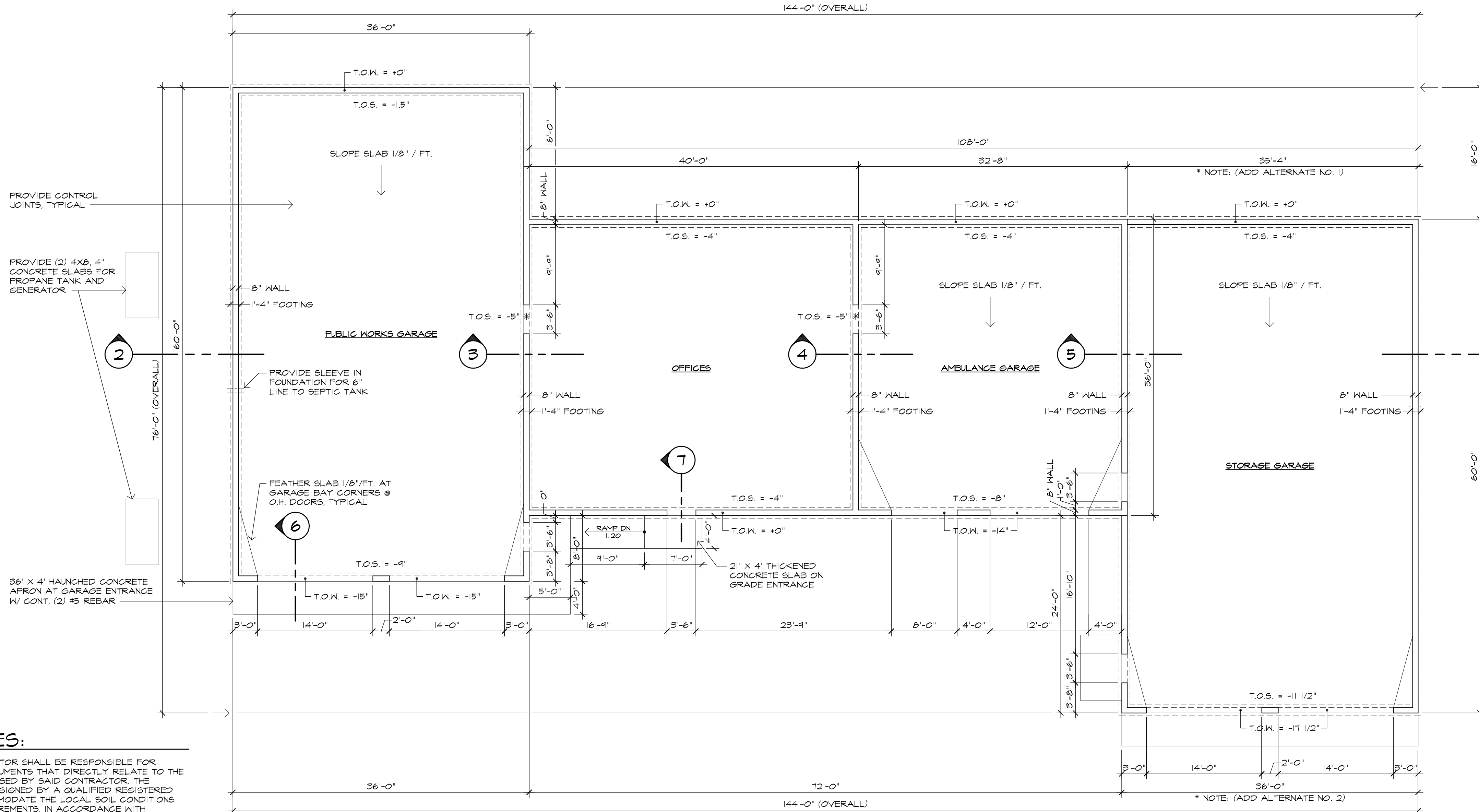
DRAWN CLINTON RICHMOND

CHECKED ECS

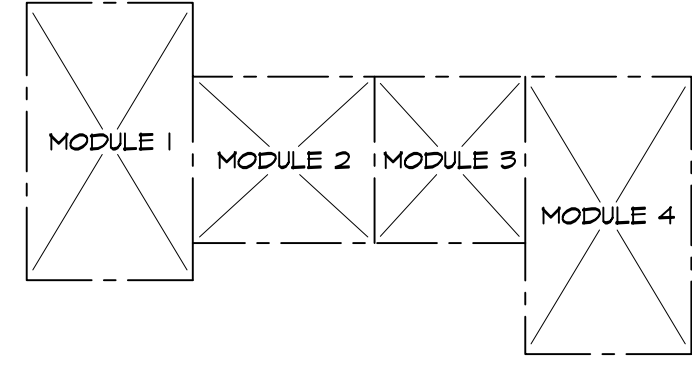
SHEET

A-1

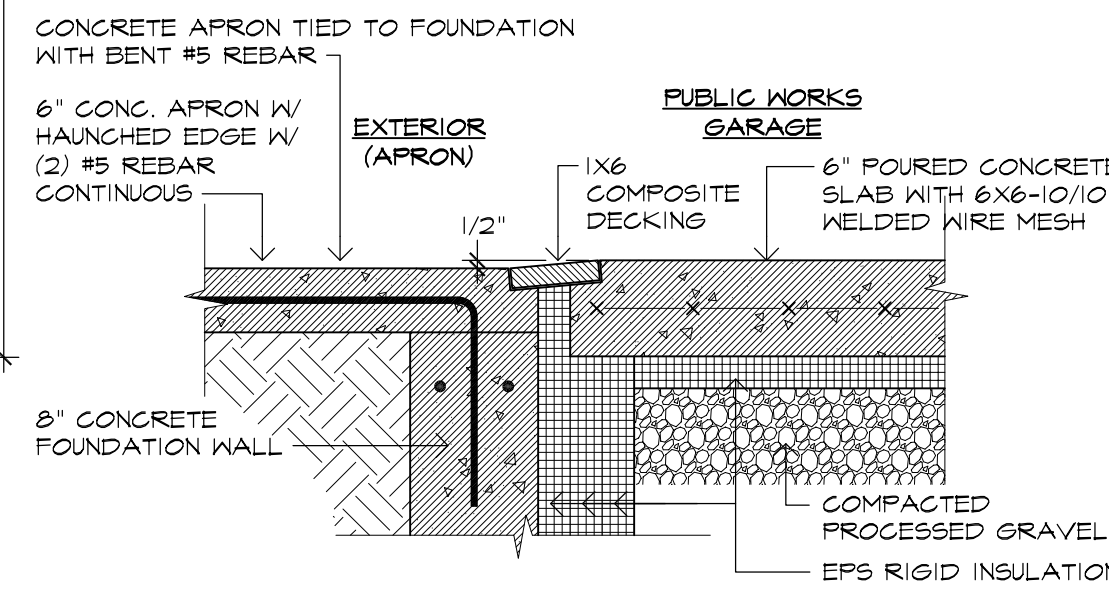
2 OF 6



7 SILL DETAIL AT PASSAGE DOORS
SCALE: 1"=1'-0"



KEY PLAN
SCALE: N.T.S.



6 GARAGE APRON DETAIL
SCALE: 1"=1'-0"

FOUNDATION NOTES:

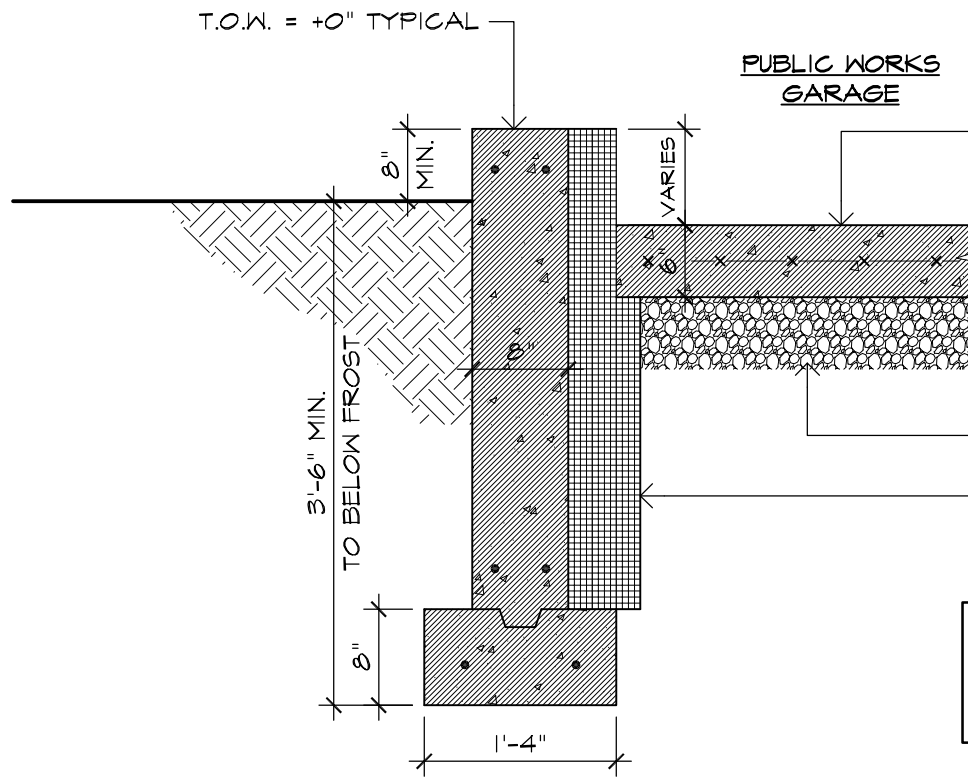
- THE POST-FRAME BUILDING CONTRACTOR SHALL BE RESPONSIBLE FOR PROVIDING FOUNDATION DESIGN DOCUMENTS THAT DIRECTLY RELATE TO THE POST-FRAME DESIGN SYSTEM PROPOSED BY SAID CONTRACTOR. THE FOUNDATION AND SLAB SHALL BE DESIGNED BY A QUALIFIED REGISTERED PROFESSIONAL ENGINEER TO ACCOMMODATE THE LOCAL SOIL CONDITIONS AND MEET BUILDING REACTION REQUIREMENTS IN ACCORDANCE WITH CURRENT BUILDING CODES. THE FOUNDATION DESIGN SHALL BE STAMPED AND SEALED BY THE ENGINEER AND WILL BE INCLUDED IN THE DOCUMENTS TO BE SUBMITTED FOR THE BUILDING PERMIT.
- THE FOUNDATION DESIGN IN THE BID SET IS INCLUDED TO DEMONSTRATE INTENT AND SHOULD NOT BE CONSTRUED TO BE AN ENGINEERED SYSTEM.
- COMPACTED FILL AND GRAVEL SHALL BE COMPACTED TO 98% OF ITS MODIFIED PROCTOR DRY DENSITY (MPD) AND WITHIN 2% OF OPTIMUM MOISTURE CONTENT AS DETERMINED IN ACCORDANCE WITH ASTM D1557.
- FOOTINGS SHALL BE PLACED ON COMPACTED VIRGIN MATERIAL CONSISTING OF SAND AND GRAVEL. NO CONCRETE SHALL BE PLACED ON TOPSOIL OR SOIL CONTAINING ORGANIC MATERIAL. IF SAND AND GRAVEL IS NOT PRESENT, OVER-EXCAVATE FOOTINGS AND PLACE A MINIMUM OF 12" OF COMPACTED GRAVEL.

1 FOUNDATION PLAN
SCALE: 1/8"=1'-0"

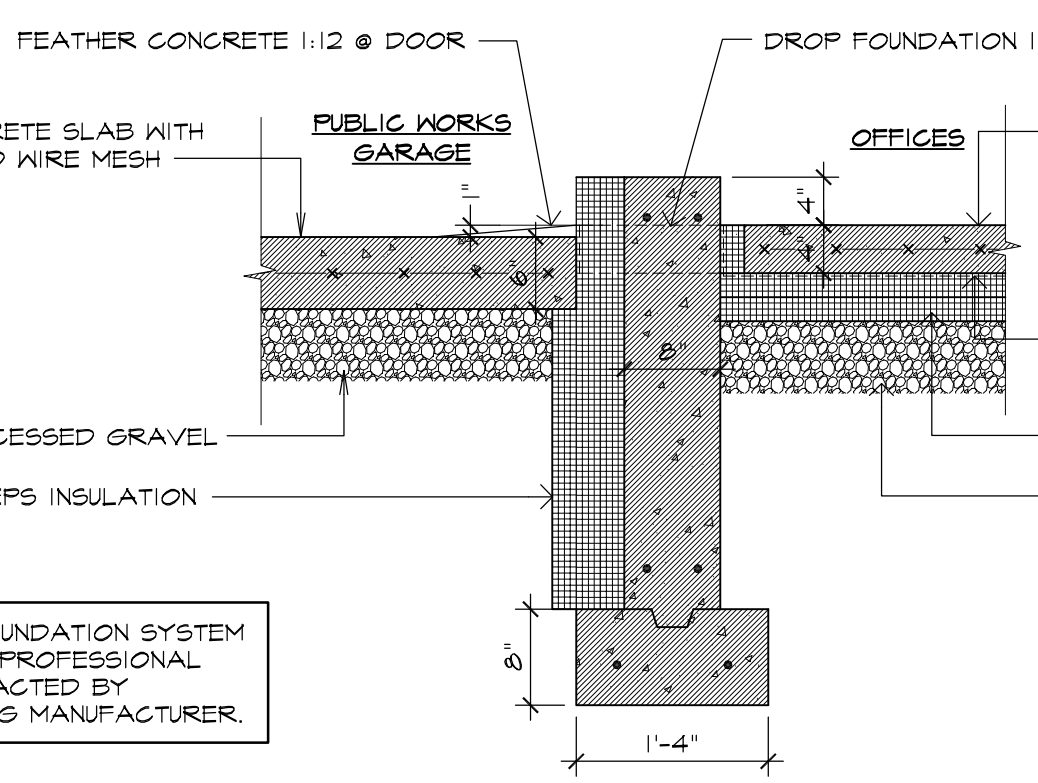
NOTE:

- THE GENERAL CONTRACTOR / PREFABRICATED BUILDING MANUFACTURER IS TO DESIGN A CONCRETE FOUNDATION THAT MEETS ALL BUILDING CODES AND REFLECTS THE EXACT LOADS OF THE PROPOSED PREFABRICATED BUILDING SYSTEM. DETAILS SHOWN IN THESE DRAWINGS ARE GENERAL AND DO NOT REPRESENT A SPECIFIC SYSTEM.

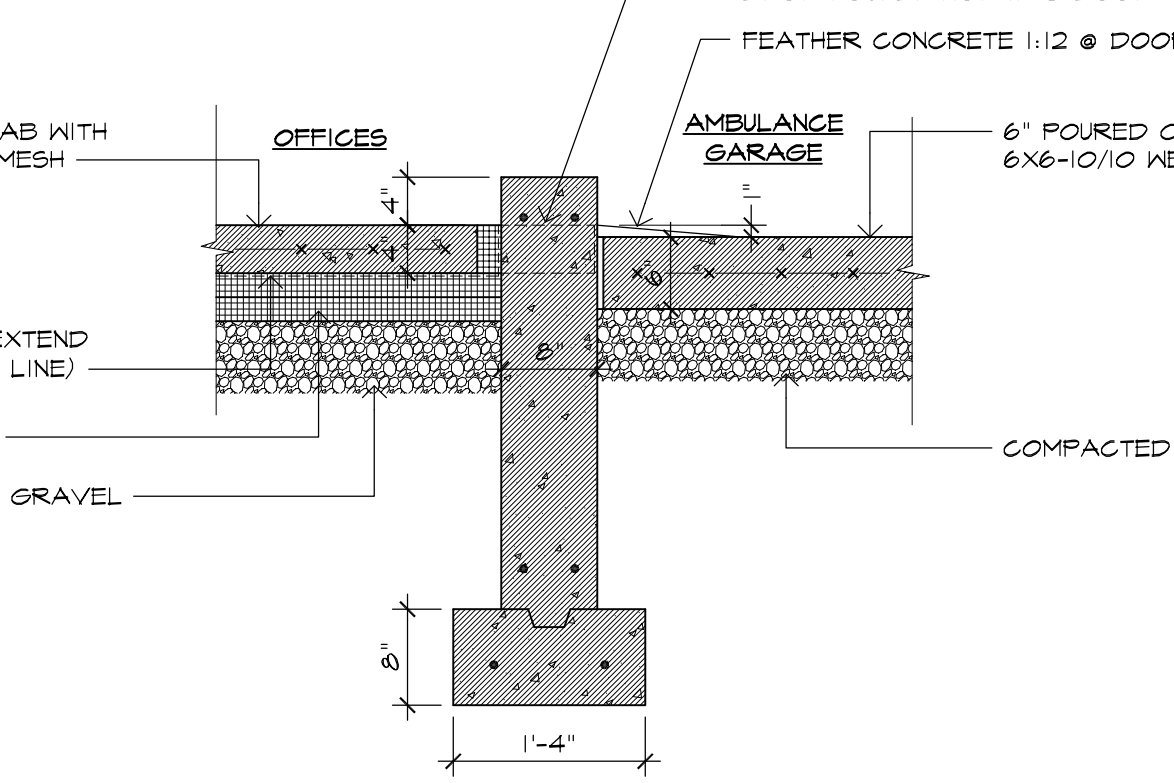
*2. STORAGE GARAGE FOUNDATION SYSTEM AND SLAB TO BE ADD ALTERNATE NO. 2.



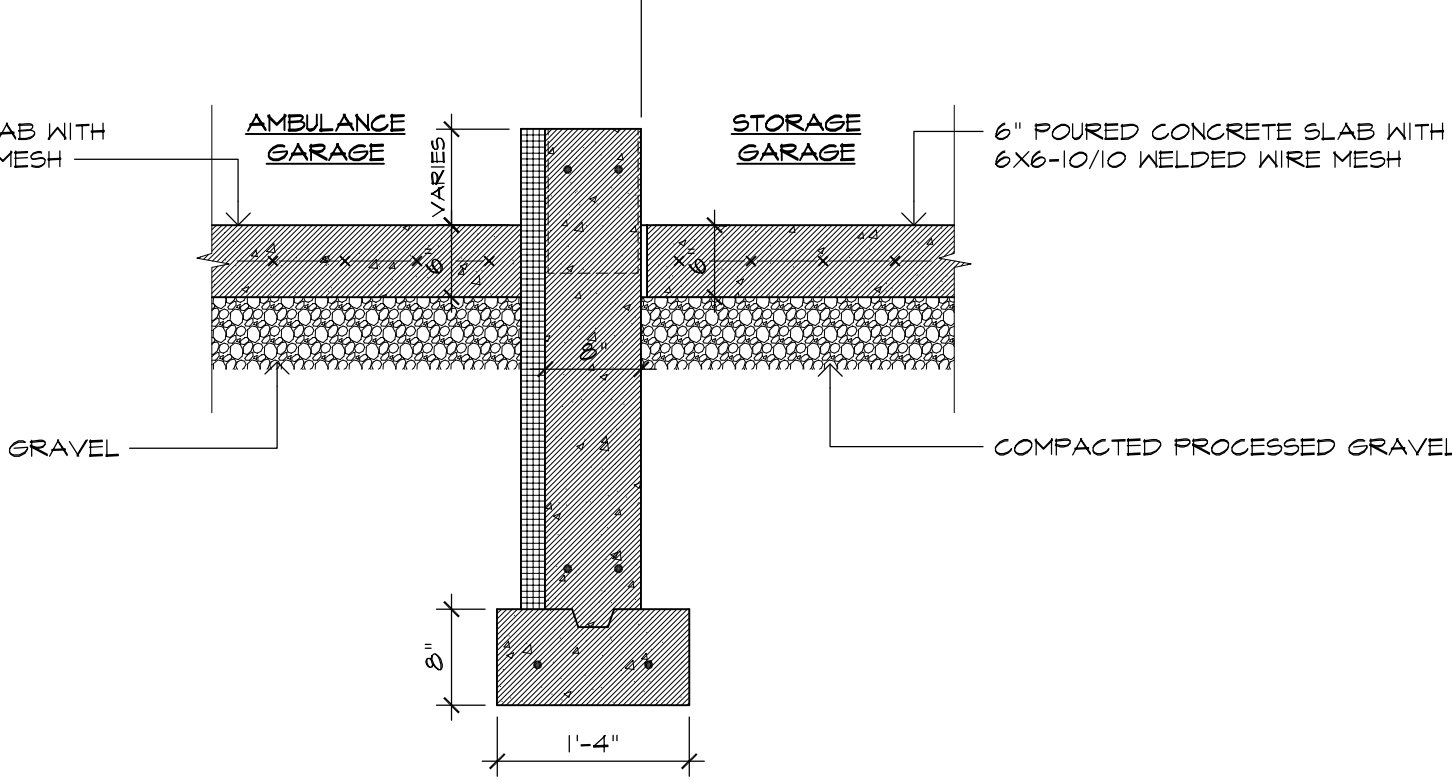
2 TYPICAL FOUNDATION DETAIL
SCALE: 3/4"=1'-0"



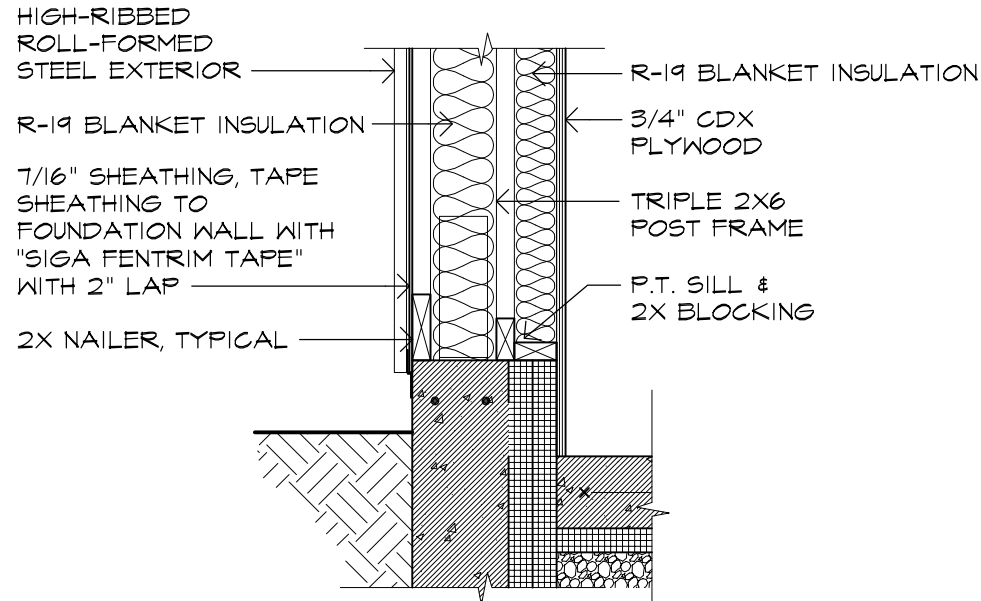
3 INTERMEDIATE FOUNDATION DETAIL
SCALE: 3/4"=1'-0"



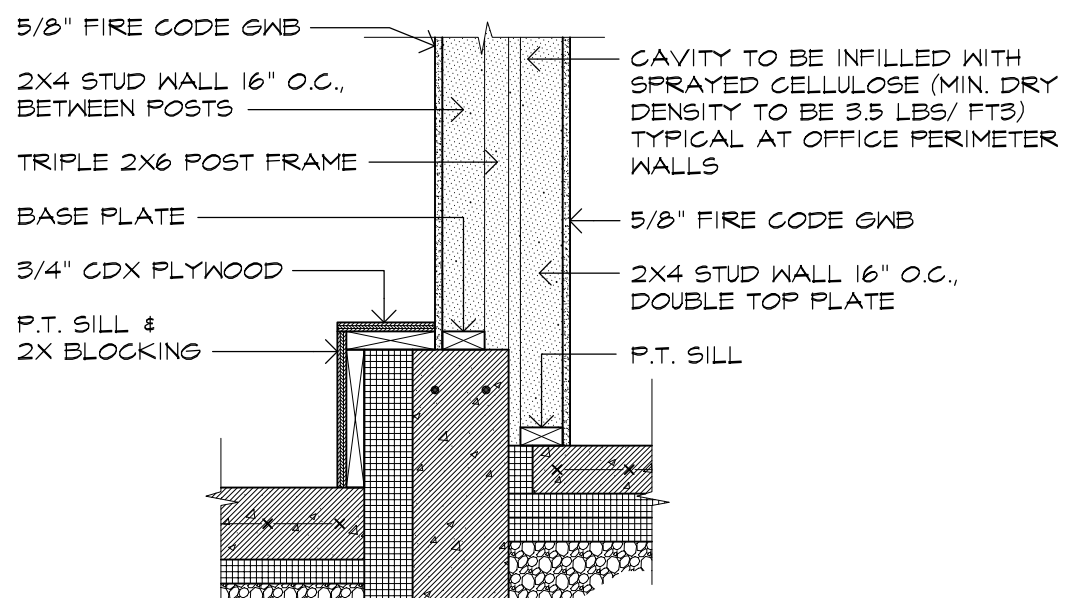
4 INTERMEDIATE FOUNDATION DETAIL
SCALE: 3/4"=1'-0"



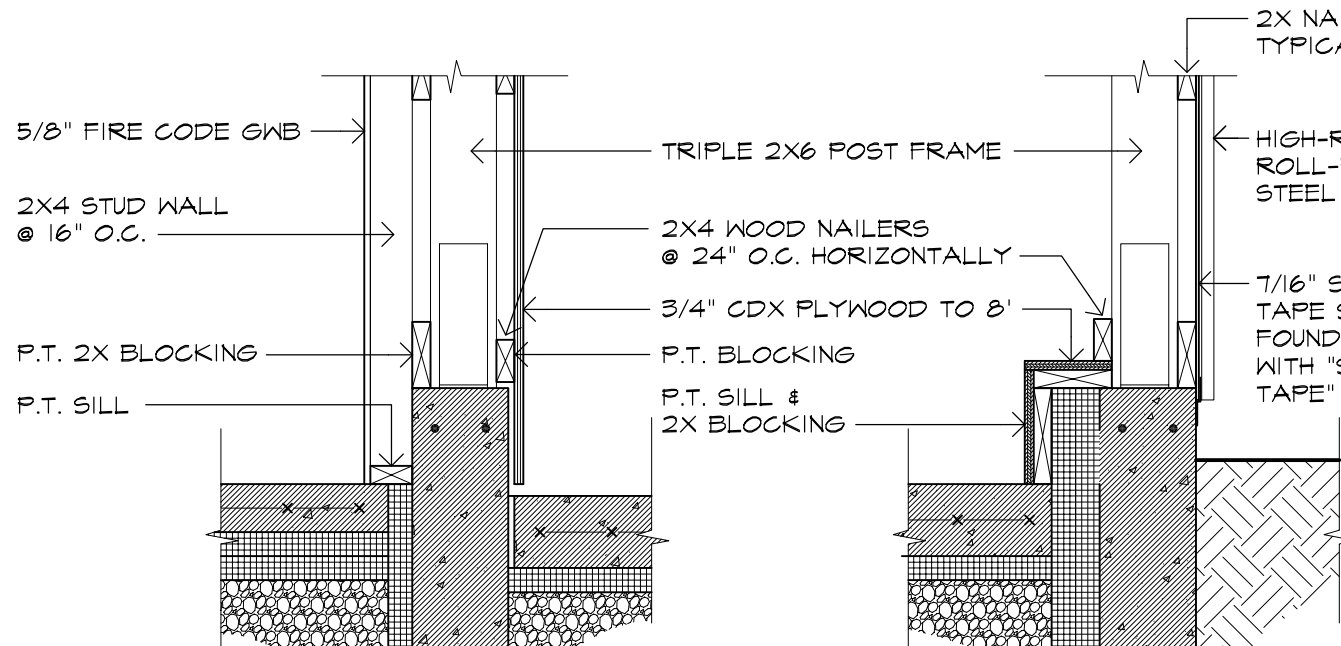
5 *ALTERNATE NO. 2 FOUNDATION DETAIL
SCALE: 3/4"=1'-0"



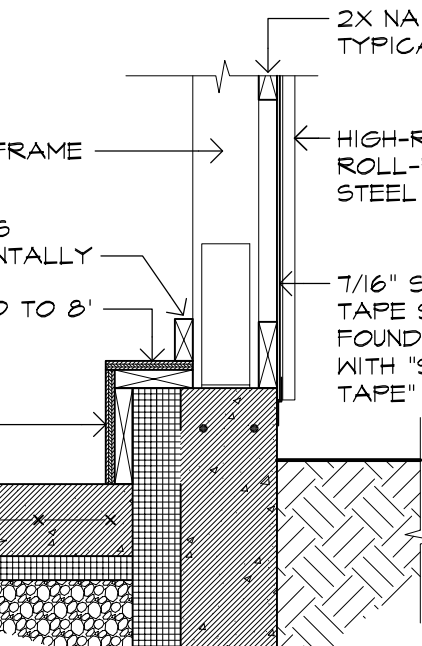
WALL TYPE A
SCALE: 3/4"=1'-0"



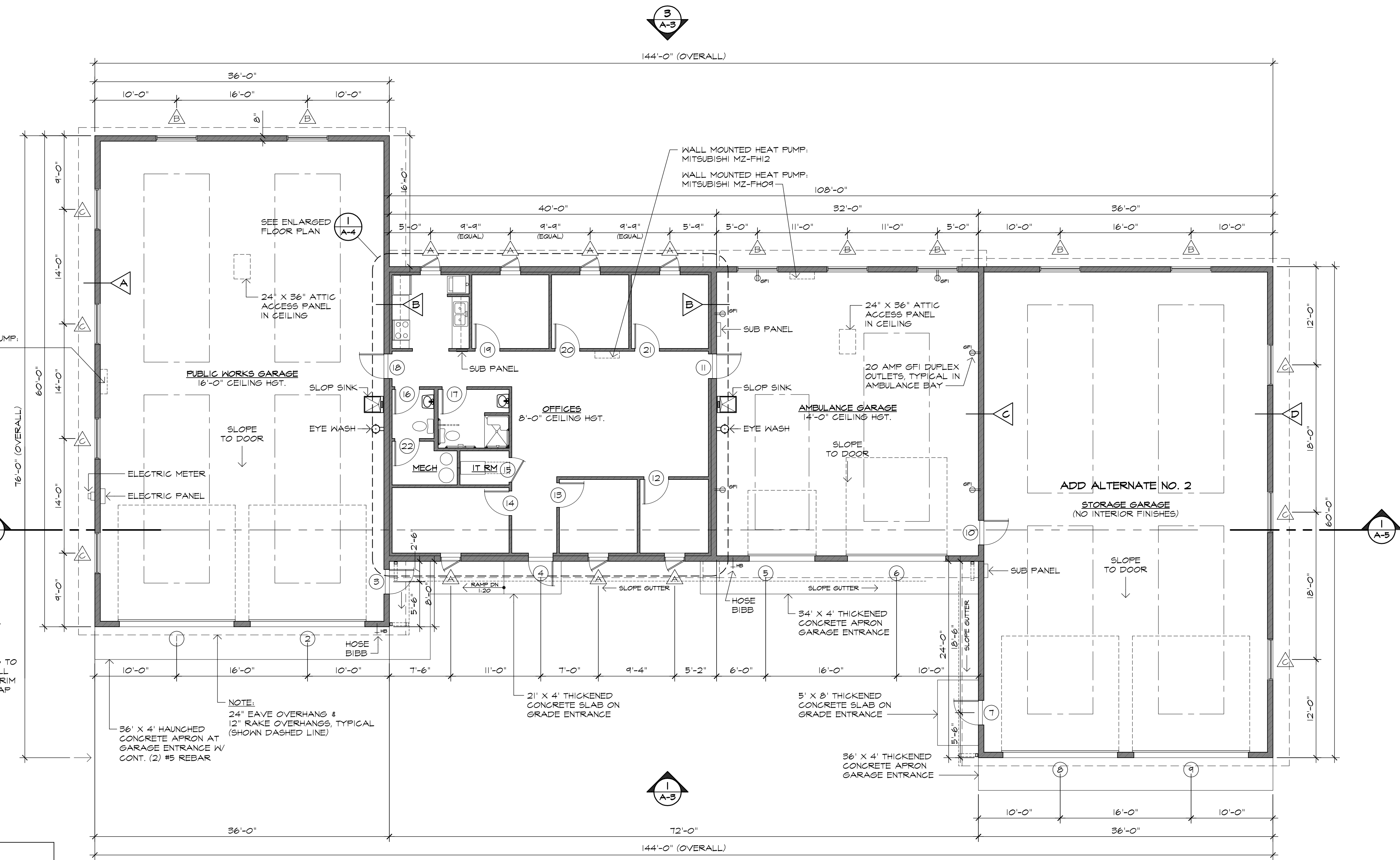
WALL TYPE B
SCALE: 3/4"=1'-0"



WALL TYPE C
SCALE: 3/4"=1'-0"



WALL TYPE D
SCALE: 3/4"=1'-0"



DOOR SCHEDULE

NO.	SIZE	DOOR				FRAME				HWR	REMARKS
		TY	MAT.	FIN.	LIGHT	LBL	TY	MAT.	FIN.		
1	14'-0" X 14'-0" X 2"	C	HM	FTD.	.	.	TRACK	.	.	.	INSULATED
2	14'-0" X 14'-0" X 2"	C	HM	FTD.	.	.	TRACK	.	.	.	INSULATED
3	3'-0" X 7'-0" X 1-3/4"	A	HM	FTD.	.	.	HM	FTD.	.	1	GALV. WELDED FRAME/ HOLLOW MTL. DR. / INSULATED
4	3'-0" X 7'-0" X 1-3/4"	B	HM	FTD.	24" X 34"	.	HM	FTD.	.	1	GALV. WELDED FRAME/ HOLLOW MTL. DR. / INSULATED
5	8'-0" X 8'-0" X 2"	C	HM	FTD.	.	.	TRACK	.	.	.	INSULATED
6	12'-0" X 12'-0" X 2"	C	HM	FTD.	.	.	TRACK	.	.	.	INSULATED
7	3'-0" X 7'-0" X 1-3/4"	A	HM	FTD.	.	.	HM	FTD.	.	1	GALV. WELDED FRAME/ HOLLOW MTL. DR. / INSULATED
8	14'-0" X 14'-0" X 2"	C	HM	FTD.	.	.	TRACK	.	.	.	INSULATED
9	14'-0" X 14'-0" X 2"	C	HM	FTD.	.	.	TRACK	.	.	.	INSULATED
10	3'-0" X 7'-0" X 1-3/4"	B	HM	FTD.	24" X 34"	.	HM	FTD.	.	1	GALV. WELDED FRAME/ HOLLOW MTL. DR. / INSULATED
11	3'-0" X 7'-0" X 1-3/4"	B	HM	FTD.	24" X 34"	.	HM	FTD.	.	1	GALV. WELDED FRAME/ HOLLOW MTL. DR. / INSULATED
12	3'-0" X 7'-0" X 1-3/8"	A	WOOD	FCF	.	.	1	HM	FTD.	2	SOLID CORE WOOD DOOR
13	3'-0" X 7'-0" X 1-3/8"	A	WOOD	FCF	.	.	1	HM	FTD.	2	SOLID CORE WOOD DOOR
14	3'-0" X 7'-0" X 1-3/8"	A	WOOD	FCF	.	.	1	HM	FTD.	2	SOLID CORE WOOD DOOR
15	3'-0" X 7'-0" X 1-3/8"	A	WOOD	FCF	.	.	1	HM	FTD.	2	SOLID CORE WOOD DOOR W/ 24" X 24" LOUVER
16	3'-0" X 7'-0" X 1-3/8"	A	WOOD	FCF	.	.	1	HM	FTD.	3	SOLID CORE WOOD DOOR
17	3'-0" X 7'-0" X 1-3/8"	A	WOOD	FCF	.	.	1	HM	FTD.	3	SOLID CORE WOOD DOOR
18	3'-0" X 7'-0" X 1-3/4"	B	HM	FTD.	24" X 34"	.	HM	FTD.	.	1	GALV. WELDED FRAME/ HOLLOW MTL. DR. / INSULATED
19	3'-0" X 7'-0" X 1-3/8"	A	WOOD	FCF	.	.	1	HM	FTD.	2	SOLID CORE WOOD DOOR
20	3'-0" X 7'-0" X 1-3/8"	A	WOOD	FCF	.	.	1	HM	FTD.	2	SOLID CORE WOOD DOOR
21	3'-0" X 7'-0" X 1-3/8"	A	WOOD	FCF	.	.	1	HM	FTD.	2	SOLID CORE WOOD DOOR
22	3'-0" X 7'-0" X 1-3/8"	A	WOOD	FCF	.	.	1	HM	FTD.	2	SOLID CORE WOOD DOOR

HARDWARE SETS

SET NO. 1	1 1/2 PAIR HINGES, LEVER HANDLE LOCK SET, CLOSER, 8" KICK PLATE, KICK DOWN DOOR STOP, WEATHERSTRIPPING, DROP DOWN SWEEP, THRESHOLD
SET NO. 2	1 1/2 PAIR HINGES, LEVER HANDLE LOCK SET, WALL MOUNTED DOOR STOP
SET NO. 3	1 1/2 PAIR SPRING HINGES, LEVER HANDLE PRIVACY SET, DOOR STOP, KICK DOWN HOLD OPEN DEVICE

* ADD ALTERNATE NO. 2

1 FLOOR PLAN
SCALE: 1/8"=1'-0"

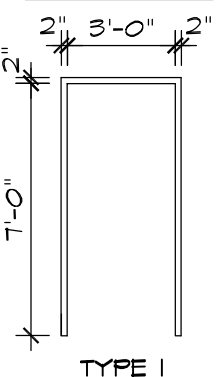
HARDWARE SCHEDULE

HINGES	STANLEY, HEAVY WEIGHT, 5 KNUCKLE, BALL BEARING, FBB 189, SATIN STAINLESS STEEL
LEVER HANDLE LOCKSET	YALE 5400 SERIES, 540T LN, BRUSHED STAINLESS STEEL, MONROE STYLE HANDLE
LEVER HANDLE LATCH SET	YALE 5400 SERIES, 540I LN, BRUSHED STAINLESS STEEL, MONROE STYLE HANDLE
CYLINDER LOCK	YALE, KEY-MARK, CYLINDER LOCK
CLOSER	LCN 4040, ADA COMPLIANT, BRUSHED STAINLESS STEEL
KICK PLATE	STANLEY, V1944 KICK PLATE, STAINLESS STEEL, 8" X 34"
KICK DOWN HOLDER	ROCKWOOD #460
THRESHOLD	PEMKO 1715AK, HEAVY DUTY, SKID RESISTANT MILL FINISH ALUMINUM, THERMALLY BROKEN

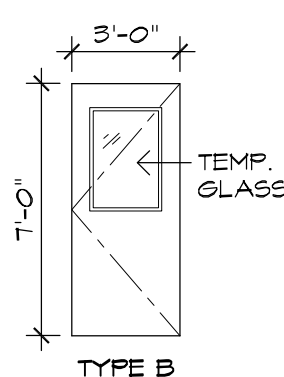
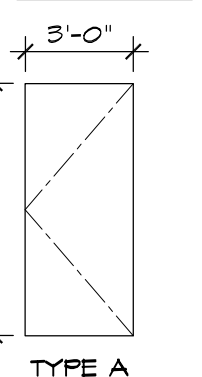
NOTES:

- ALL HARDWARE TO BE COMMERCIAL GRADE.
- ALL EXTERIOR DOORS SHALL HAVE NON-REMOVABLE HINGE PINS.
- ALL HARDWARE TO BE ADA COMPLIANT.

FRAME TYPES:



DOOR TYPES:



TYPE C

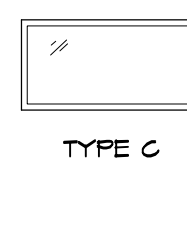
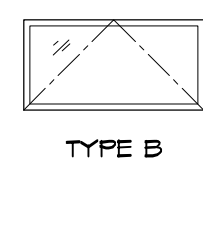
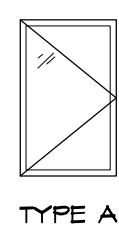
WINDOW SCHEDULE

TYPE	QTY.	DESCRIPTION	MATERIAL	SIZE		FINISH		GLAZING TYPE	U-VALUE	HARDWARE SET	FINISH	REMARKS
				WIDTH	HEIGHT	INTERIOR	EXTERIOR					
A	7	CASEMENT *MEETS EGRESS REQ'S	VINYL	2'-8"	4'-4"	WHITE	WHITE	LOW E ARGON	0.19	1	NICKEL	TRIPLE GLAZED
B	7	AWNING	VINYL	3'-0"	5'-0"	WHITE	WHITE	LOW E ARGON	0.24	1	NICKEL	1/2" INSULATED
C	7	FIXED	VINYL	3'-0"	5'-0"	WHITE	WHITE	LOW E ARGON	0.24	-	NICKEL	1/2" INSULATED

NOTES:

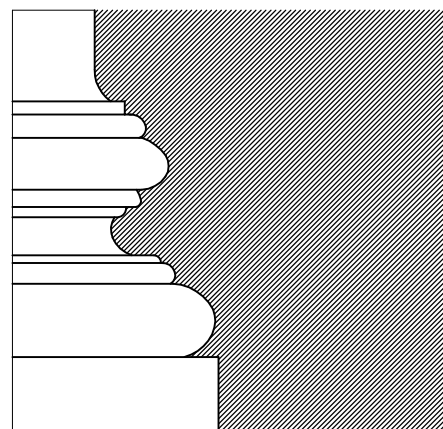
- WINDOWS TO HAVE 1/2" DRYWALL RECEIVER ON THREE SIDES.
- MODULE 1 WINDOWS ARE TO BE TRIPLE GLAZED.

WINDOW TYPES:



WINDOW HARDWARE SETS

SET NO. 1	CRANK OPERATOR, WEATHER STRIPPING, & SASH LOCK
-----------	--



EVELYN COLE SMITH ARCHITECTS, LLC

PO Box 182
134 Main St
Putnam, CT
06260
860 315 9570

www.ecsarchitects.com

STAMP

RESERVED

PROJECT

Proposed New Facilities
**Pomfret
Emergency Resources
Center**
Route 44
Pomfret, Connecticut

Prepared for

Town of Pomfret
5 Haven Road (Route 44)
Pomfret Center, CT 06259

REVISIONS

Date	Description

SHEET TITLE

Design-Build
Documents

Floor Plan
& Schedules

PROJ. NO. 2018003

SCALE AS NOTED

DATE May 8, 2018

DESIGNED LYN SMITH, AIA, LEED AP

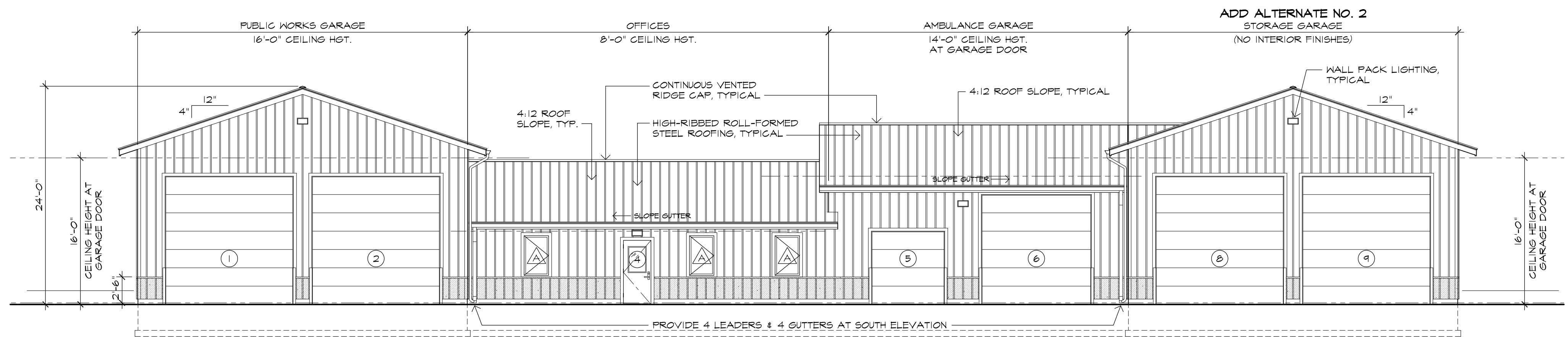
DRAWN CLINTON RICHMOND

CHECKED ECS

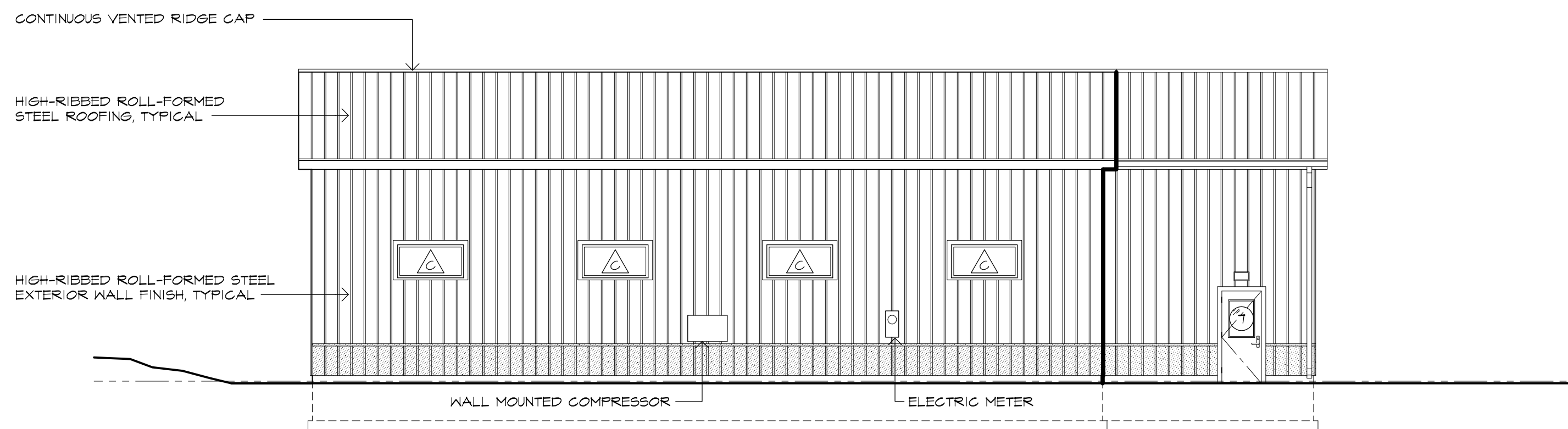
SHEET

A-2

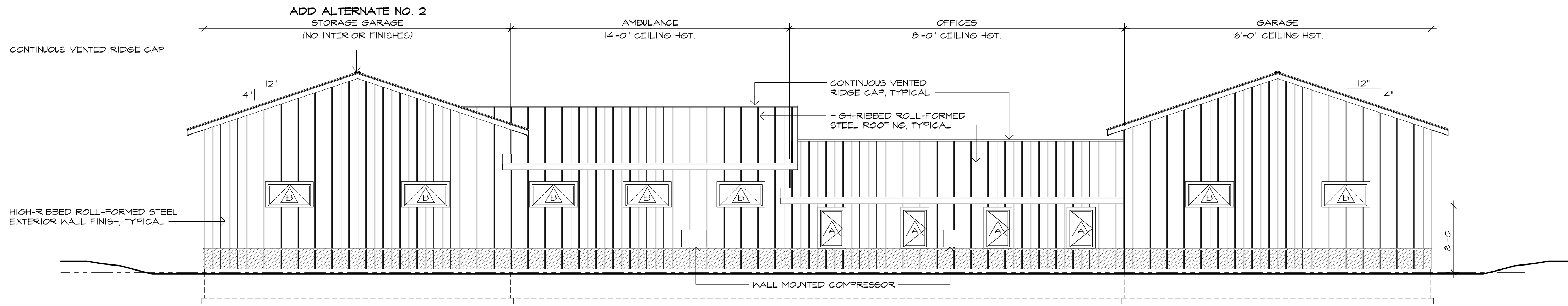
3 OF 6



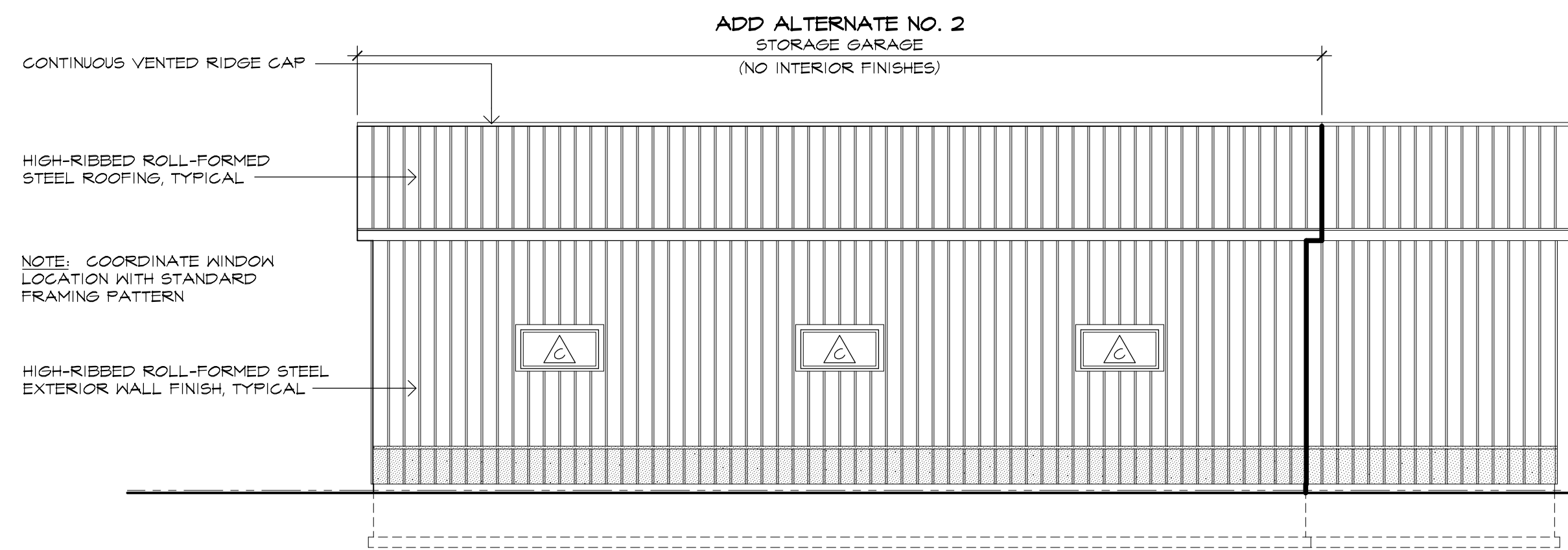
1 SOUTH EXTERIOR ELEVATION
A-3 SCALE: 1/8"=1'-0"



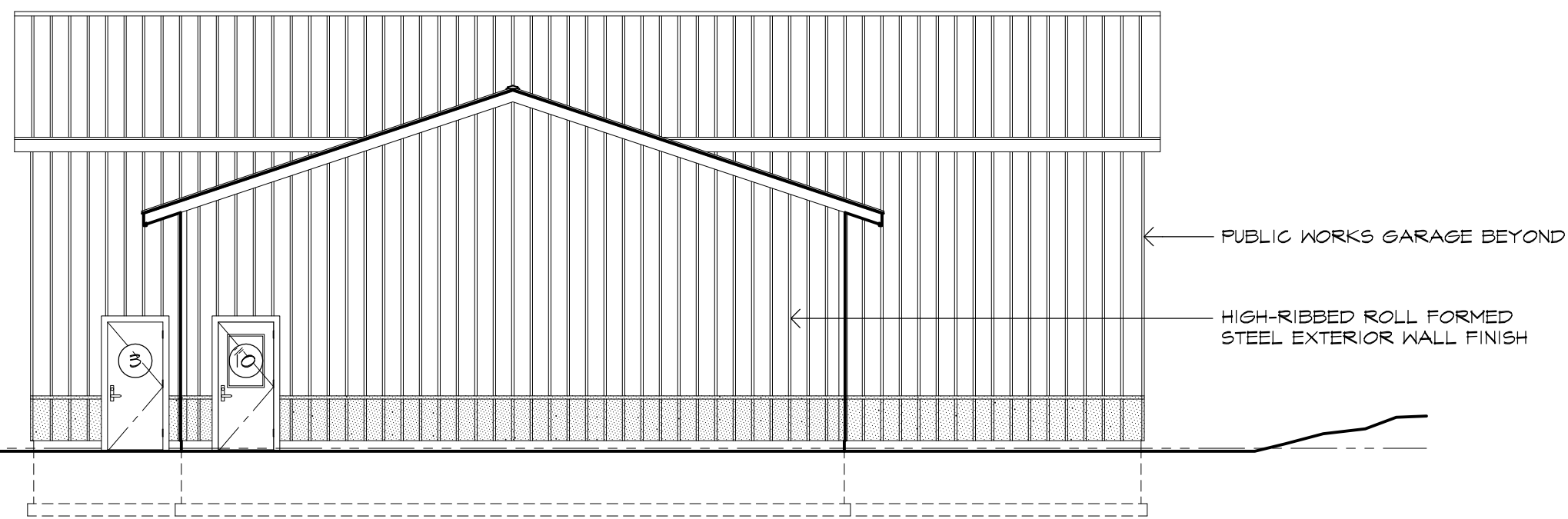
2 WEST EXTERIOR ELEVATION
A-3 SCALE: 1/8"=1'-0"



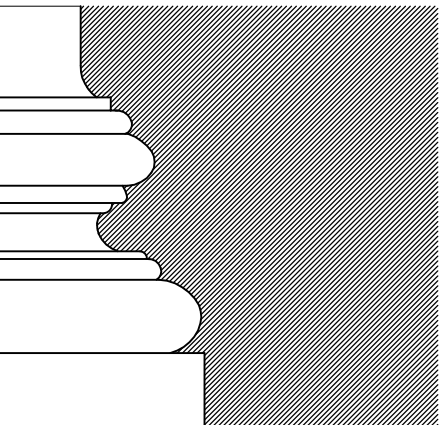
3 NORTH EXTERIOR ELEVATION
A-3 SCALE: 1/8"=1'-0"



4 EAST EXTERIOR ELEVATION
A-3 SCALE: 1/8"=1'-0"



5 EAST EXTERIOR ELEVATION WITHOUT STORAGE GARAGE ADD ALTERNATE NO. 2
A-3 SCALE: 1/8"=1'-0"



EVELYN COLE SMITH ARCHITECTS, LLC
PO Box 182
134 Main St
Putnam, CT
06260
860 315 9570

www.ecsarchitects.com

STAMP

RESERVED

PROJECT

Proposed New Facilities
**Pomfret
Emergency Resources
Center**
Route 44
Pomfret, Connecticut

Prepared for

Town of Pomfret
5 Haven Road (Route 44)
Pomfret Center, CT 06259

REVISIONS

Date	Description

SHEET TITLE

**Design-Build
Documents**

Exterior Elevations

PROJ. NO. 2018003
SCALE AS NOTED
DATE May 8, 2018
DESIGNED LYN SMITH, AIA, LEED AP
DRAWN CLINTON RICHMOND
CHECKED ECS

SHEET

A-3

4 OF 6

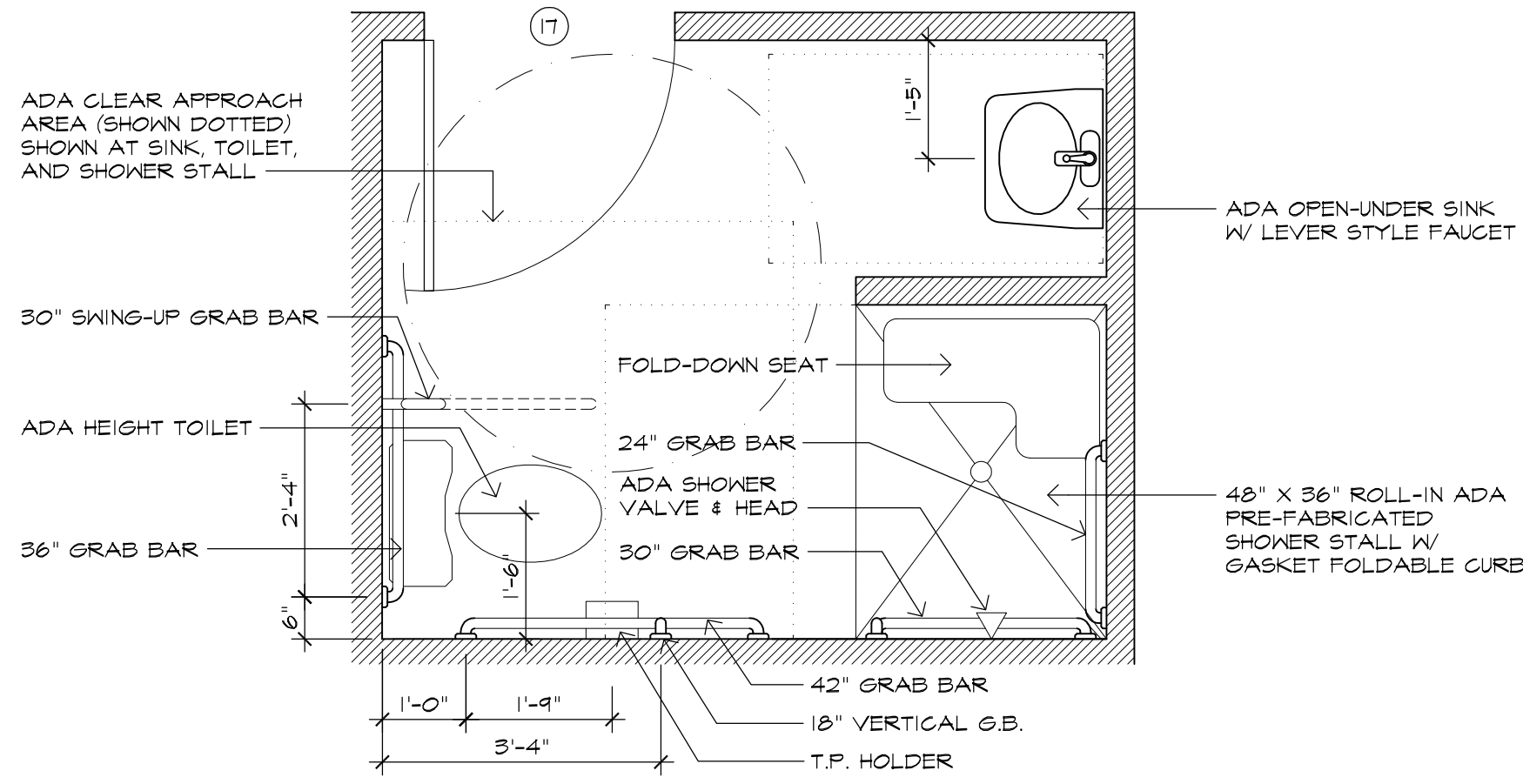
PLUMBING FIXTURE SCHEDULE				
SYM	QTY	DESCRIPTION	MFG	MODEL NUMBER
A	2	WATER CLOSET - FLOOR MTD., CHINA, ELONGATED FRONT, 1.28 GPF. PROVIDE OLSONITE #10CC-AM OPEN FRONT SEAT	MANSFIELD	137-3173 Alto 1.28
B	2	LAVATORY - WALL MTD., CHINA 22" X 18", 4" CENTERS, CONCEALED ARM CARRIER, SMITH #0700 SUPPORT. PROVIDE ADA FAUCET, 4" CENTERS, THERMOSTATIC MIXING VALVE, ETF-460-A GRID STRAINER	MANSFIELD	2018 HBNS-4
C	1	SHOWER - ONE PIECE, GEL COAT SHOWER UNIT, 48" X 37" X 78", WITH INTEGRAL SOAP DISHES, 7/8" THRESHOLD, SLIP RESISTENT FLOOR, CENTER DRAIN. PROVIDE ACCESSORIES TO INCLUDE: CAULKLESS DRAIN, 24" AND 30" GRAB BARS, FOLD-DOWN SEAT, PRESSURE BALANCE VALVE WITH H	FREEDOM SHOWERS	APTXTFT4836BF.625L
D	1	KITCHEN SINK - 22" X 19 1/2" X 6 1/2", SINGLE BOWL TOP MOUNT, ADA STAINLESS STEEL SINK AND FAUCET KIT WITH PERFECT DRAIN. 18 GAUGE, 304 STAINLESS. FAUCET: LK406GNO4T4SC.	ELKAY	LRAD221965PDSC
E	2	UTILITY SINK - 24" X 20" X13" D, FIBERGLASS TUB WITH FAUCET, DRAIN, LEGS AND FITTINGS	UTILIATUB	18 GAL.
F	2	EYEWASH STATION - WALL MOUNTED, STAINLESS STEEL BOWL, WITH SS BOWL COVER AND THERMOSTATIC MIXING VALVE.	GUARDIAN	G1814
G	2	HOSE BIBB - AUTOMATIC DRAINING, FREEZELESS, BACKFLOW PROTECTED, FIELD TESTABLE, NO SPRAY BACK, "C" INLET, REMOVABLE TEE KEE, CHROME PLATED	WOODFORD	67
H	1	WELL TANK - WELL X TROL, 44 GALLON TANK	AMTROL	
J	1	WATER FILTER	TWIST 2 CLEAN	T2C-075
K	1	WATER HEATER - ELECTRIC, 40 GAL CAPACITY, 0.96 THERMAL EFFICIENCY, ENERGY STAR RATED	MARATHON	MR40245

Note: The items noted above depict "Basis of Design" standards. Comparable or better equipment may be incorporated into the work.

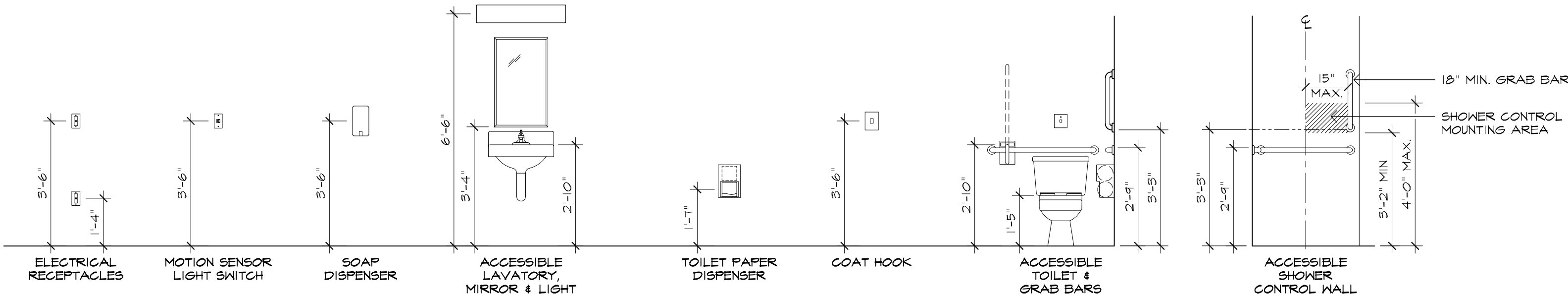
EQUIPMENT SCHEDULE					
ITEM	QTY	DESCRIPTION	MANUFACTURER	MODEL NUMBER	REMARKS
1	1	HEAT PUMP	MITSUBISHI	MZ-FH18	PUBLIC WORKS GARAGE
2	1	HEAT PUMP	MITSUBISHI	MZ-FH12	OFFICES
3	1	HEAT PUMP	MITSUBISHI	MZ-FH09	AMBULANCE GARAGE
4	1	HEAT RECOVERY UNIT			100 CFM with ECM motors
5	3	CEILING MOUNTED FAN	EMERSON	CF788SW	MODULE 1 AND 3
6	1	GENERATOR			30 KW

Note: The items noted above depict "Basis of Design" standards. Comparable or better equipment may be incorporated into the work.

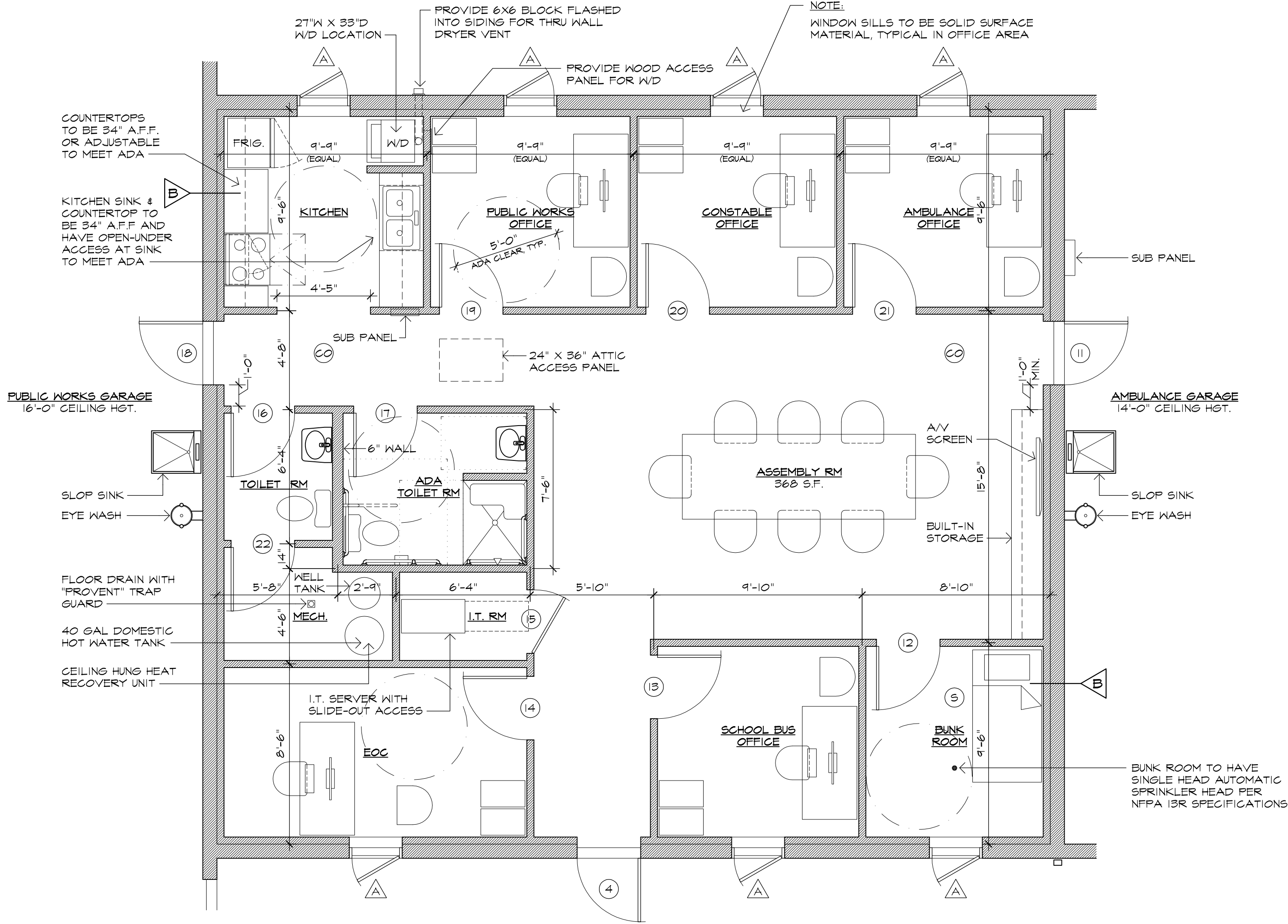
LIGHTING FIXTURE SCHEDULE					
TYPE	DESCRIPTION	MANUFACTURER	MODEL NUMBER	LAMPS	REMARKS
A	SURFACE MOUNTED LED, 2' X 2', CURVED, DEEP CENTER, MATTE WHITE FINISH	HE WILLIAMS	ATS2-22-130/835-DRV-UNV	LED	OCCUPANCY SENSOR WITH MANUAL OVERRIDE
B	HIGH BAY - CLASSIC ROUND HIGH BAY, FROSTED POLYCARBONATE LENS, 50,000 HOURS, PASSIVE INFRARED OCCUPANCY SENSOR	HE WILLIAMS	GC-L120-840-PR-OCC-GC-HK10-UNV	LED	8 FIXTURES IN MODULES 1 AND 4, AND 6 FIXTURES IN MODULE 3
C	THERMOPLASTIC LED EXIT SIGN & EMERGENCY LIGHT COMBO UNIT. RED LETTERS & WHITE HOUSING. EMERGENCY LIGHT SHALL BE CAPABLE OF OPERATING 1 REMOTE HEAD. PROVIDE W/SELF TESTING ELECTRONICS. 6 VOLT	DUAL-LITE	CVT3RW3-1	LED	WALL MOUNTED AT 7'-6" AFF
D	WALL PACK - MEDIUM TRAPIZOIDAL, BRONZE, LED, FULL CUTOFF FIXTURE, WITH PHOTO CELL	HE WILLIAMS	WPTZ-L38/750-PC-UNV	LED	WALL MOUNTED AS SHOWN ON BUILDING ELEVATIONS
E	SURFACE MOUNTED LED CLOSET LIGHT	W-LITE	WT-CL-24WH-20161111	LED	IT AND MECHANICAL ROOMS



2 ENLARGED TOILET ROOM
A-4 SCALE: 1/2"=1'-0"



3 RESTROOM FIXTURE & EQUIPMENT MOUNTING HEIGHTS
A-4 SCALE: 3/8"=1'-0"



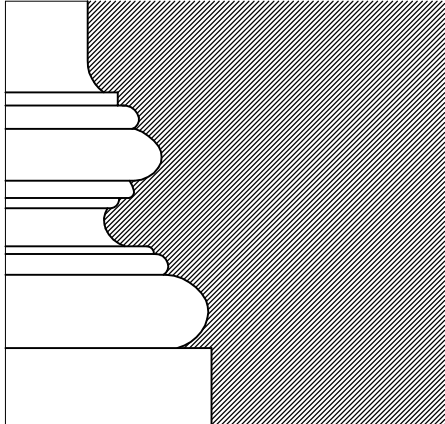
1 ENLARGED FLOOR PLAN - OFFICES
A-4 SCALE: 1/4"=1'-0"

POWER NOTES:

1. PROVIDE DUPLEX ELECTRICAL OUTLETS PER CODE IN OFFICE AREA.
2. PROVIDE DATA DROP IN EACH OFFICE AND 2 IN ASSEMBLY ROOM.
3. COORDINATE POWER LOCATIONS FOR MODULES 1 AND 4 WITH OWNER.
4. AMBULANCE BAY POWER NOTED ON A-2.

LIGHTING NOTES:

1. PROVIDE & INSTALL 2X2 SURFACE MOUNTED LED LIGHT FIXTURE IN EACH OFFICE, BUNK ROOM, KITCHEN, HALLS, TOILET ROOMS. FIXTURES TO HAVE OCCUPANCY SENSOR AND MANUAL SWITCH.
2. PROVIDE 4-WAY SWITCHING AT ASSEMBLY ROOM ALONG WITH OCCUPANCY SENSORS.
3. PROVIDE LED SURFACE MOUNTED, OCCUPANCY SENSOR OPERATED, FIXTURE IN IT AND MECHANICAL ROOM.



EVELYN COLE SMITH ARCHITECTS, LLC

PO Box 182
134 Main St
Pulnam, CT
06260
860 315 9570

www.ecsarchitects.com

STAMP

RESERVED

PROJECT

Proposed New Facilities
**Pomfret
Emergency Resources
Center**
Route 44
Pomfret, Connecticut

Prepared for
Town of Pomfret
5 Haven Road (Route 44)
Pomfret Center, CT 06259

REVISIONS

Date	Description

SHEET TITLE

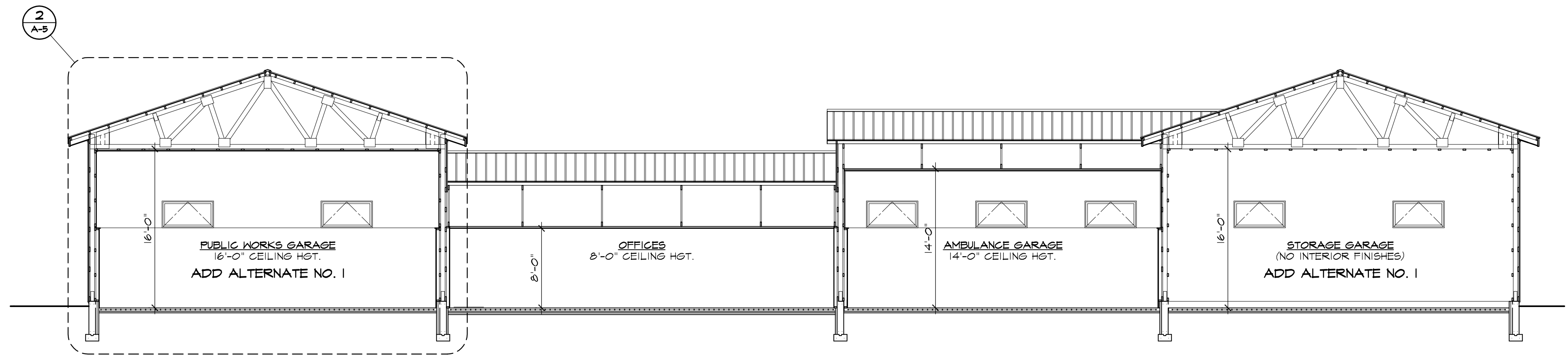
Design-Build
Documents

Enlarged Floor Plan
at Offices

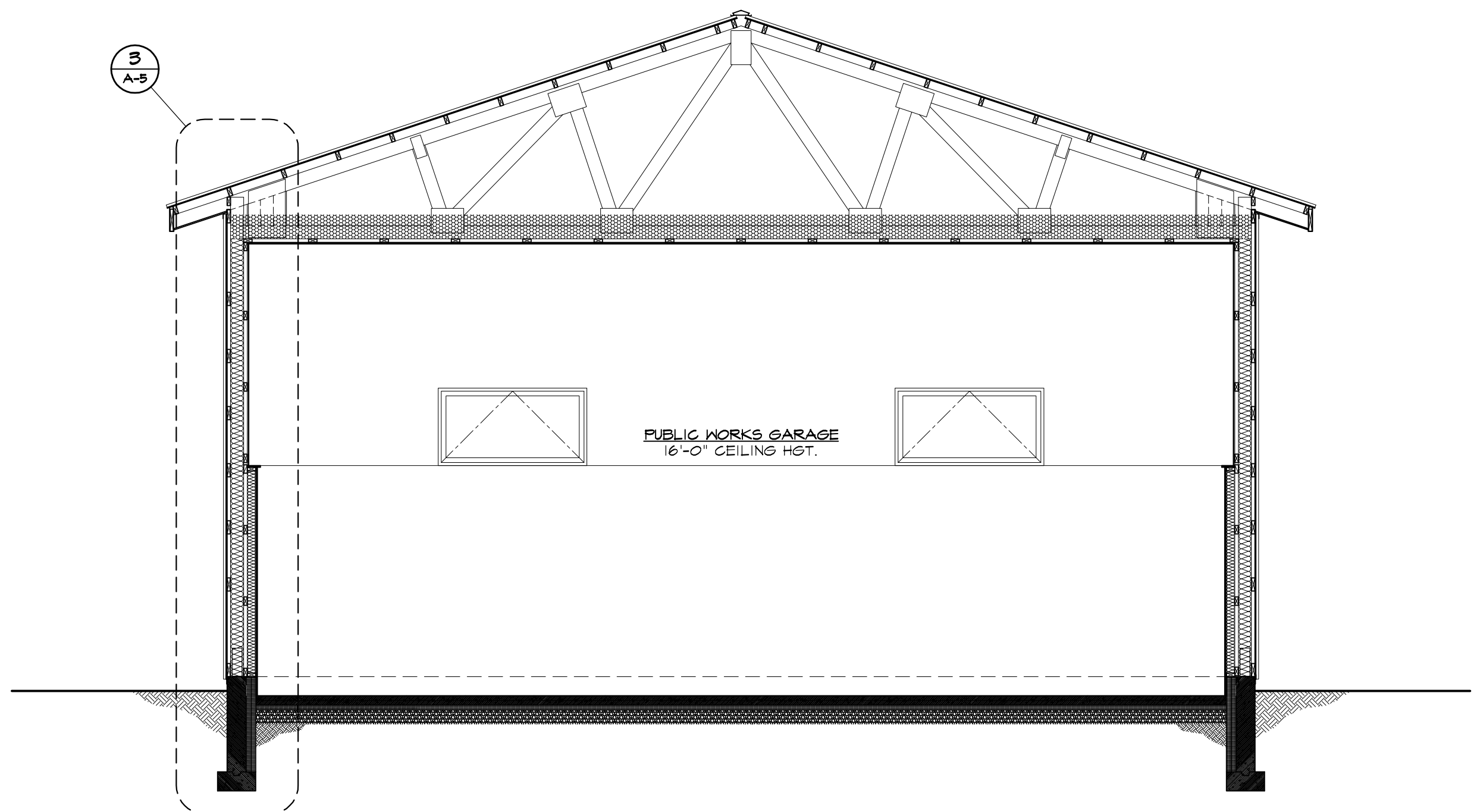
PROJ. NO.	2018003
SCALE	AS NOTED
DATE	May 8, 2018
DESIGNED	LYN SMITH, AIA, LEED AP
DRAWN	CLINTON RICHMOND
CHECKED	ECS

SHEET

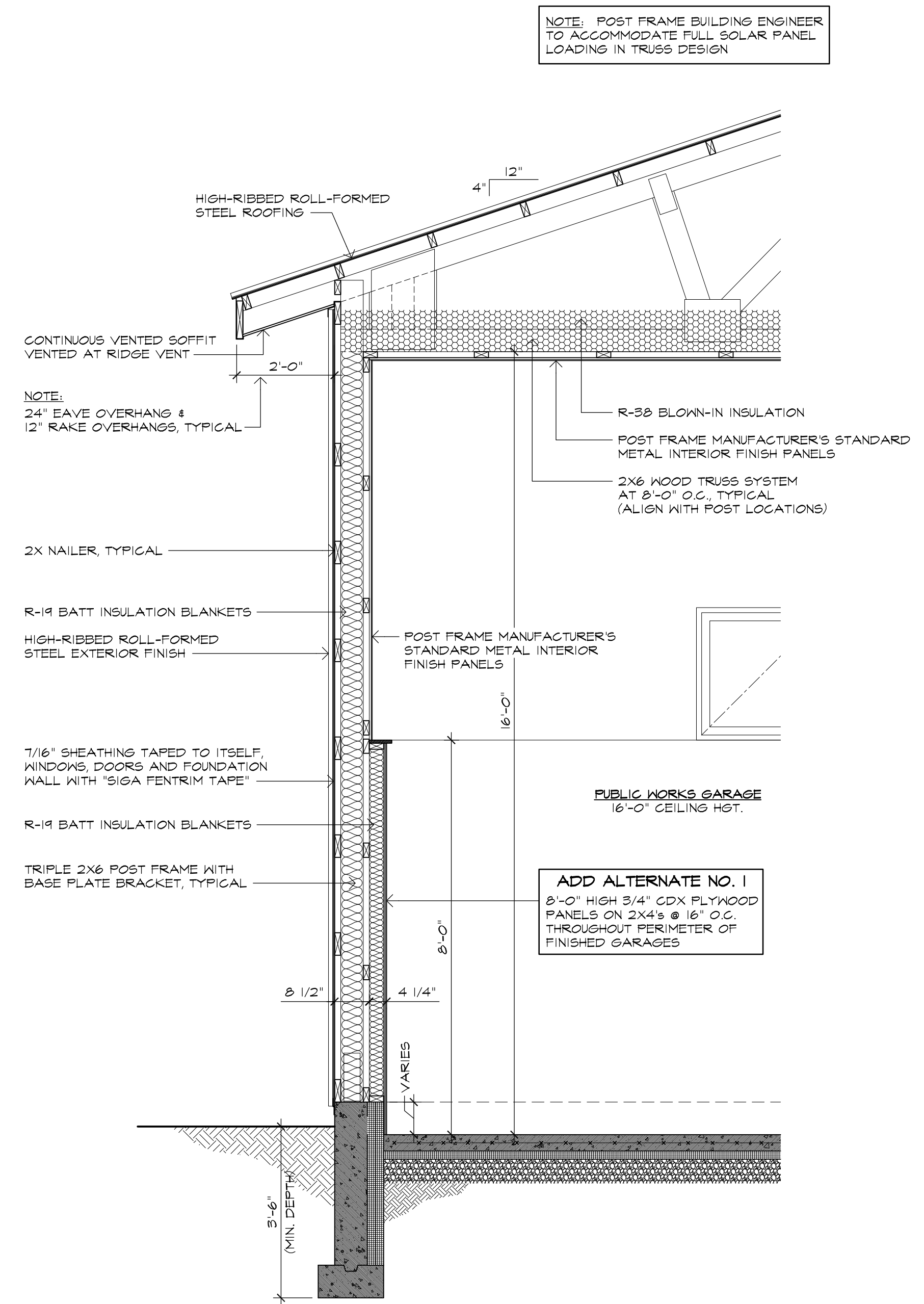
A-4



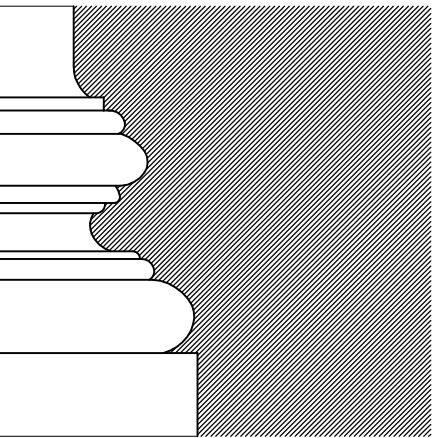
1 BUILDING SECTION
A-5 SCALE: 1/8"=1'-0"



2 BUILDING SECTION @ PUBLIC WORKS GARAGE
A-5 SCALE: 1/4"=1'-0"
(SIMILAR @ STORAGE GARAGE)
(STORAGE GARAGE UNFINISHED)



3 WALL SECTION
A-5 SCALE: 1/2"=1'-0"



EVELYN COLE SMITH ARCHITECTS, LLC
PO Box 182
134 Main St
Pulnam, CT
06260
860 315 9570

www.ecsarchitects.com

STAMP

RESERVED

PROJECT

Proposed New Facilities
**Pomfret
Emergency Resources
Center**
Route 44
Pomfret, Connecticut

Prepared for
Town of Pomfret
5 Haven Road (Route 44)
Pomfret Center, CT 06259

REVISIONS

Date	Description

SHEET TITLE

**Design-Build
Documents**
**Building Sections
& Details**

PROJ. NO. 2018003
SCALE AS NOTED
DATE May 8, 2018
DESIGNED LYN SMITH, AIA, LEED AP
DRAWN CLINTON RICHMOND
CHECKED ECS

SHEET

A-5

6 OF 6